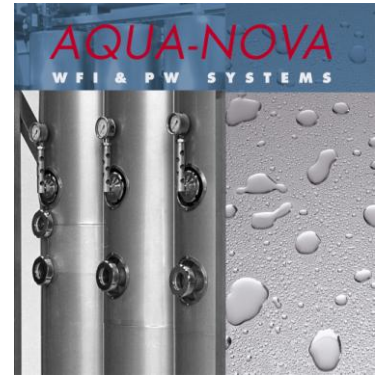


AQUA-NOVA Elander Systems AB
 P.O. Box 246
 S-182 06 DJURSHOLM, Sweden

Sales department: Factory:
 Phn: +46 – (0)8 755 60 88 +46 – (0)70 638 65 02
 Fax: +46 – (0)8 755 55 10 +46 – (0)44 12 72 70
 Mobile: +46 – (0)70 795 23 86

Mail: info@aquanova.se
 URL: www.aquanova.se



BIO-AQUA High Quality Water Systems represent more than 30 years of experience of storage and distribution of high quality water produced by filtration and distillation in combination.

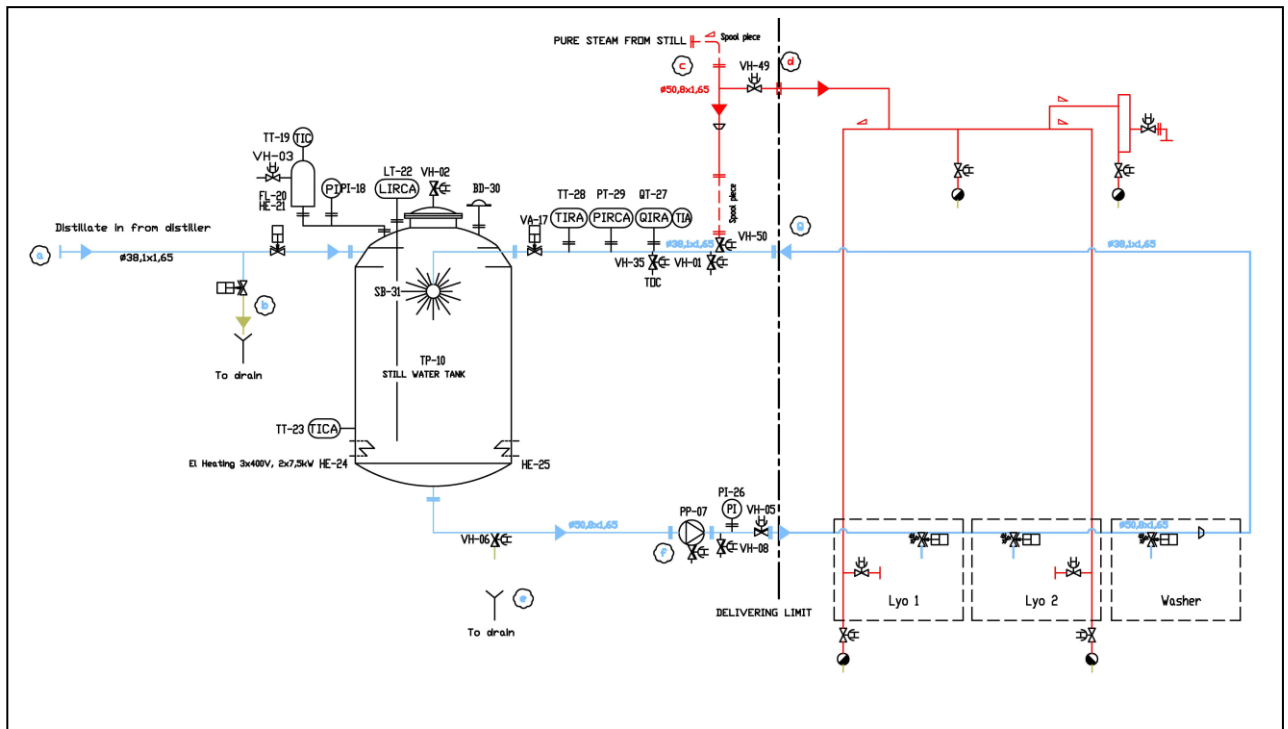
The systems consist of Highly Purified Water generation with Distillation & Pure Steam production where we deliver the complete system from incoming tap water to the final water quality, hot or cold, at the various Points of Use in the facility.

Our COMBI units can produce WFI and simultaneously provide Pure Steam of the same quality for sanitization & sterilization purposes. Together with a well designed HPW treatment of incoming waters the complete system will ensure the highest possible water quality for the end user.

The water is produced and stored either hot or cold as a closed sterile system that is fully documented, validated and tested as per the latest international standards.

The systems are individually designed based on the needs of the user and the local conditions.

CLIENT ADAPTED SYSTEM



BIO-AQUA Laboratory Stills and Pure Steam Generators have a number of design features to achieve an optimised function and a safe distillate quality according to the latest editions of USP and EP for Water For Injection or higher qualities.

The COMBI stills can produce the High Quality Distilled water, hot or cold, to a storage tank and Pure Steam under pressure. Together with storage & distribution they form a closed sterile system.

The units are electrically or steam heated and are characterised by their fully automatic operation, reliability and simple handling.

The complete system can be sanitized with self produced Pure Steam before production is started.

Unit can be programmed to produce WFI and fill up the storage tank during night leaving it free to produce Pure Steam to the autoclave during the day.

The equipment is semi or fully automatic with quality surveillance. A number of optional equipment is available for different quality standards and system designs.



AQUA-NOVA E-100-3 SG COMBI, 100 L/h WFI and up to 100 Kg/h of Pure Steam. 35-80 kW.

BIO-AQUA Water Systems for microbiological research and cell cultivation

A complete system of pre treatment-distillation-storage-distribution-dispensing where all parts in contact with the feed water or distillate are of high quality materials.

Titanium and PTFE can be used in special R&D designs where the bacteriological substances can be sensitive to metal ions.

The distillate can be stored and distributed at ambient temperature

PLC AUTOMATED FUNCTIONS

- Automatic start/stop on signal from WFI tank or external signals for Pure Steam.
- Discharge of sub-standard distillate during start, operation and stop.
- Automatic valve regulation of connected media
- Automatic control of the system Points of Use and temperatures.
- Automatic surveillance & alarms of critical process and system values.



BIO-AQUA R&D, electrically heated, 35 L/h, with tank WFI 500, all titanium.

BIO-AQUA units, electrically or steam heated.

E-25-C, electrically heated, single effect, 18 kW, 25 L/h WFI or 25 Kg/h Pure Steam.

E-50-C, electrically heated, single effect, 35 kW, 50 L/h or 50 Kg/h Pure Steam.

E-100-3, electrically heated, multi-effect, 35 kW, 100 L/h or 50 Kg/h Pure Steam.

E-200-4, electrically heated, multi-effect, 50 kW, 200 L/h or 70 Kg/h Pure Steam.

E-500-6, electrically heated, multi-effect, 85 kW, 500 L/h or 100 Kg/h Pure Steam.

E-100-3 COMBI, electrically heated, 85 kW, 120 L/h WFI & 60 Kg/h Pure Steam or only 100 Kg/h of PS.

S-50/150-C, steam heated 3-6 bar g, 50 – 200 L/h WFI or up to 80 Kg/h Pure Steam.

Other capacities on request.